

OGF Club House



RIVER LEAF MODELS, LLC

Thank you for purchasing the OGF Club House structure kit. Your kit includes everything that you need to assemble the final product. We recommend using “Carpenter’s Glue”, which is available through different brands, including *Elmer’s*. We also recommend using a steel square for perfectly aligning your walls. Perpendicularity is important; a drafting triangle will also suffice. A sharp *X-Acto* knife and a sanding tool are also necessary, with either fine sandpaper or a nail file being suitable.

Step #1 –Glue the Four Walls Together.

Apply Carpenter’s Glue to the edges of the side walls (B & D). Do *not* use an excessive amount of glue, this minimizes unwanted seeping through the sides. Apply a thin bead of glue and spread it out as a thin coat. You may also apply a bead of glue to the inside surfaces of the front and side walls (A & C).

Carpenter’s Glue will afford you the time to perfectly align your walls, as there is some “setup” time for drying. I recommend that you glue one attachment at a time, in one sitting apiece. Again, this will give you the flexibility to adjust the perpendicularity of the structure. Once you have your walls all secured, I recommend letting the glue dry additionally for 24 hours. While the glue is setting, you can use the roof panel as means to check and ensure that the building corners are perpendicular, and the building is sound. If you have access to them, then you may want to use clamps positioned with the clamping faces on the front and rear of the building, forming a tight glued seal.

With structures made of lighter, or less sturdy, material, it is common practice to run a square brace tucked into each quarter using 1/4” or 3/8” square wood. With our River Leaf Models this is not necessary, but the option is available if desired.

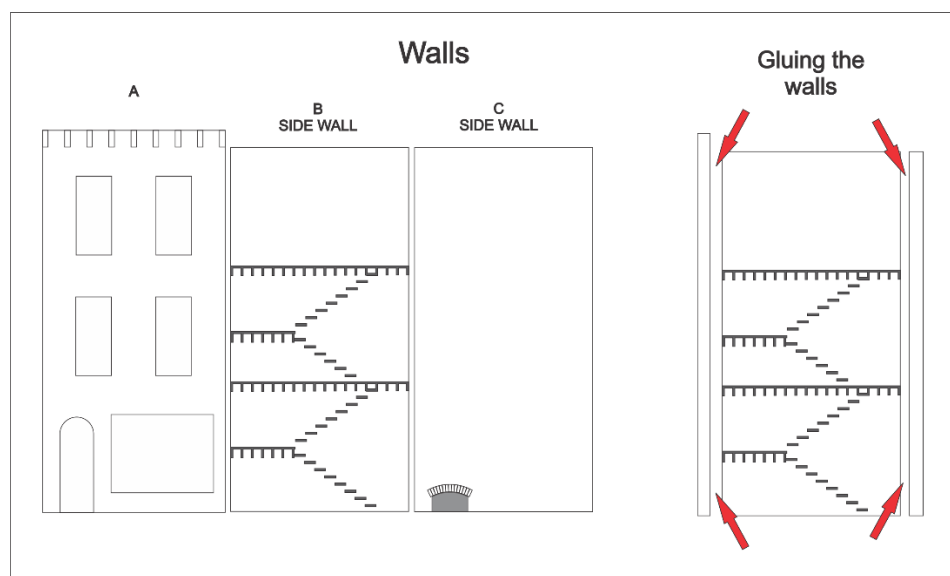


FIGURE 1 – GLUING YOUR STRUCTURE WALLS

Step #2 – Painting the Base Structure.

There are several methods for painting the structure. Experienced modelers will find that the structure is well suited to any number of painting and detailing techniques. Here is one technique which will deliver excellent results.

Once the glue has completely dried, you will then find that you have a very sturdy base with which to work. To achieve the effect of mortar lines between brick layers, paint the entire structure with an undercoat of the color you desire for your brick surface. Red ochre is a logical choice. Paint the entire structure like this. Then let the building thoroughly dry.

Letting the building completely dry is an important step, seal the entire building using flat clear coat and let it dry well.

After the clear coat is completely dried, we will proceed to apply the mortar lines.

Using a plastic spatula (credit card or a hotel key is good) apply the spackling paste, gently and trying to do not past over the same place twice. If some grooves are not getting spackling paste it is ok because will look more real.

Using and damp cloth wipe out the spackling paste left over gently rubbing the surface.

Apply Indian ink or any other weatherize method of your preference.

The spackling past can be mixed with acrylic paint to give different tones and color.

Your structure is now stable, squared up and ready for the details. Prior to any installation, this is the time to decide on your color scheme and paint your detail parts, including window and door frames. Painting these prior to installation will yield the best results.

Step #3 – Assembling the Cornice

Now move on to the cornice assembly.
We recommend painting the brackets when they still on holder.
Paint the top cornice piece too. (yellow in the picture)
Carefully cut each bracket and clean the top to be flat. Using a small amount of glue place each one on the already marked places, starting from the edges. Add two extras on each side as showed in the picture (green color)

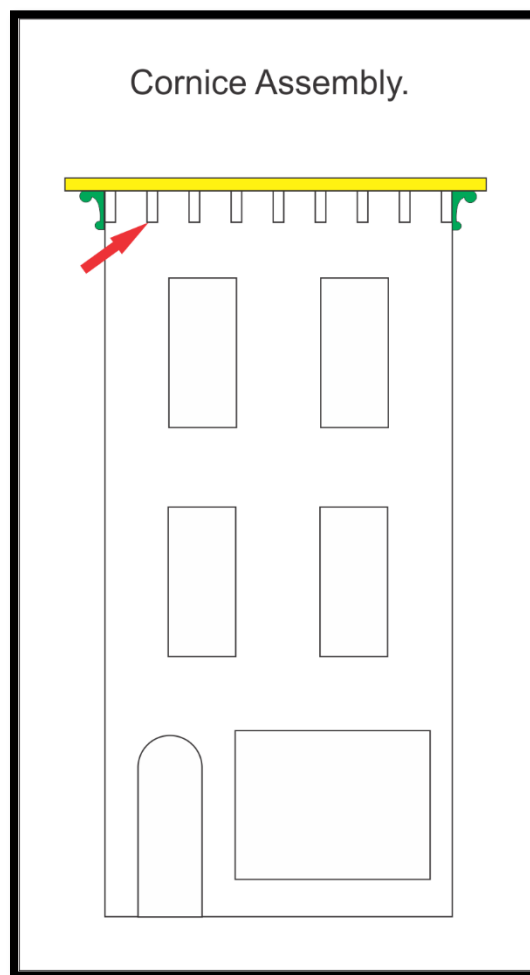


FIGURE 2 – PLACE AND GLUE THE CORNICE AND BRACKETS

Step #4 – Applying Door, Windows and Details

After painting the structure, go ahead and select your colors for the detail parts which include the entrance door and main cornice at the top of the structure. Plate glass windows are a snug fit into place and blinds.

For acetate glass we recommend **TOMBOW MONO** glue.

Windows frame provided are plastic. We recommend painting them coating first using clear coat, then use any acrylic paint.

The etched windows can be painted using water base paint too. Paint the letters and let the paint dry for 30 min, then wipe gentle the paint left over. Repeat the process if it is necessary.

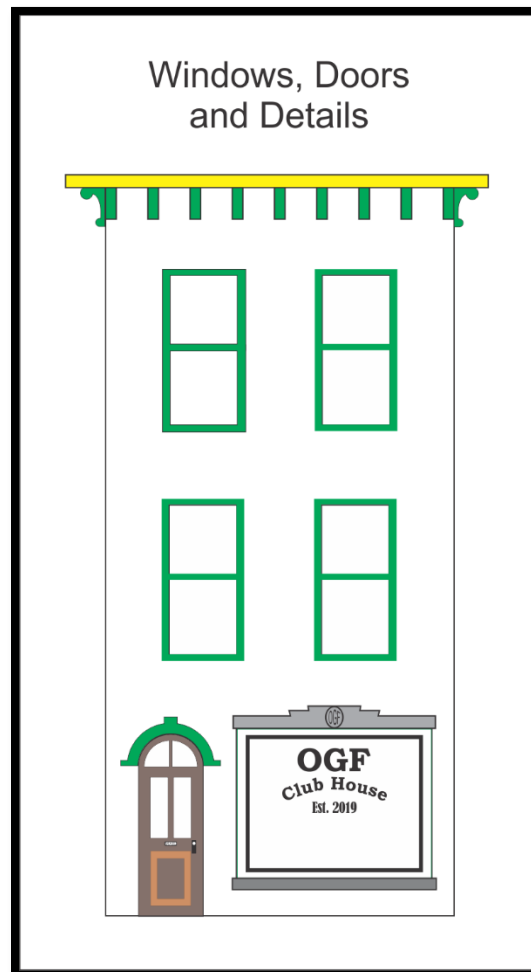
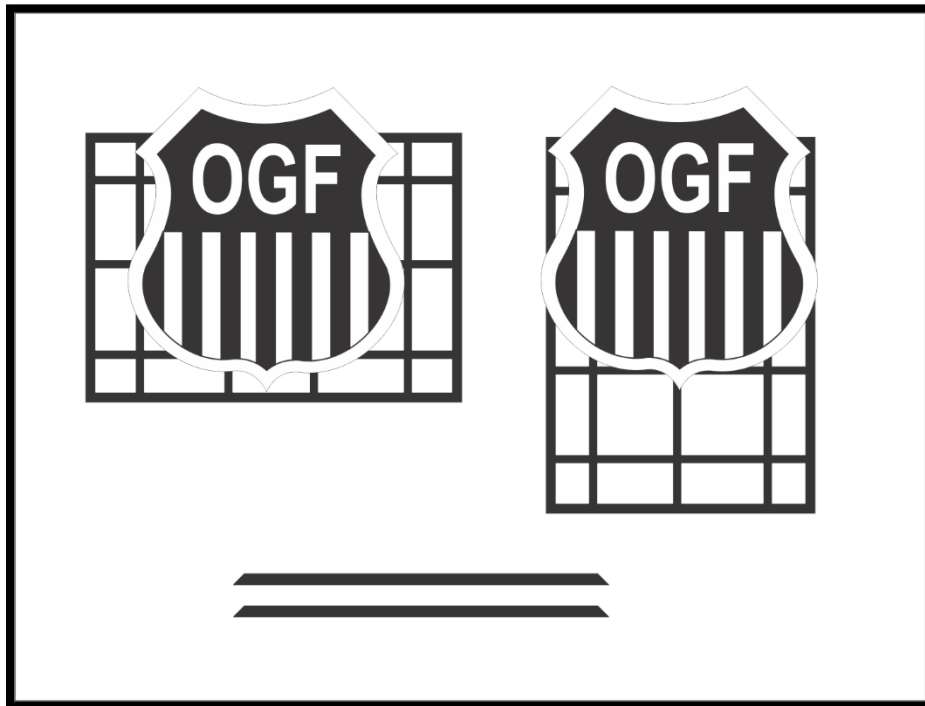


FIGURE 3 – APPLYING DOOR AND WINDOWS

Step #5– Top roof Sign.

The roof top sign was engraved in basswood. Paint it accordingly the OGF colors
We try to avoid any small font for easy painting.

The configuration allows to you the option to install it in two ways. Two truss support beams are provided to add rigidity to the structure.

**FIGURE 4 – TOP ROOF SIGN**

Step #6 – Roof

Roof installation are self-explanatory. I recommend painting the roof black and applying masking tape to overlap the edge for real appearance.

Congratulations! Your building is complete!

With your building now finished, you may opt to further enhance the structure using weathering techniques such as chalk or misting. Keep in mind that weather runs from top to bottom and will be concentrated in areas where water may gather and run off, such as around windows. Likewise, you may have weather “splash up” along the base. We will be posting tips on aging and weathering on our website in the near future.

If you have questions on construction or suggestions, please contact us by email at riverleafmodels@gmail.com

Andre Garcia
www.riverleafmodels.us